



Air Conditioning Technical Data

Concealed floor standing unit



EEEDEN15-100

FNQ-A

TABLE OF CONTENTS

FNQ-A

1	Features	2
2	Specifications	3
	Technical Specifications	3
	Electrical Specifications	3
3	Safety device settings	4
4	Options	5
5	Dimensional drawings	6
6	Centre of gravity	7
7	Piping diagrams	9
8	Wiring diagrams	10
	Wiring Diagrams - Single Phase	10
9	Sound data	11
	Sound Power Spectrum	11
	Sound Pressure Spectrum	12
10	Fan characteristics	13

1 Features

Designed to be concealed in walls

- Ideal for installation in offices, hotels and residential applications
- Blends unobtrusively with any interior décor: only the suction and discharge grilles are visible
- Its low height (620 mm) enables the unit to fit perfectly beneath a window
- Requires very little installation space as the depth is only 200mm
- High ESP allows flexible installation



Home leave operation



Fan only



Auto cooling-heating changeover



Fan speed steps



Dry programme



Air filter



Weekly timer



Infrared remote control



Wired remote control



Centralised control



Auto-restart



Self diagnosis



Twin/triple/double twin application



Multi model application



VRV for residential application

2 Specifications

2-1 Technical Specifications				FNQ25A	FNQ35A	FNQ50A	FNQ60A	
Cooling capacity	Nom.	kW		2.6	3.4	5.0	6.0	
Heating capacity	Nom.	kW		3.2	4.0	5.8	7.0	
Casing	Colour			Unpainted				
	Material			Galvanised steel plate				
Dimensions	Unit	Height/Width/Depth	mm	620 / 720 (1)/750/200		620 / 720 (1)/1,150/200		
	Packed unit	Height/Width/Depth	mm	265/925/885		265/1,325/885		
Weight	Unit		kg	23		30		
	Packed unit		kg	27		35		
Air filter	Type			Resin net with mold resistance				
Fan	Type			Sirocco fan				
	Quantity			2		4		
	Air flow rate	Cooling	High	m ³ /min	8.7		16.0	
			Nom.	m ³ /min	8		14.8	
			Low	m ³ /min	7.3		13.5	
	Heating	High	High	m ³ /min	8.7		16.0	
			Nom.	m ³ /min	8		14.8	
			Low	m ³ /min	7.3		13.5	
	External static pressure	High		Pa	48		49	
Nom.		Pa	30		40			
Fan motor	Quantity			1				
	Model			KFD-280-44-8A		KFD-280-65-8A		
	Speed	Steps		3				
	Output	Rated	W	44		65		
Sound power level	Cooling		dBA	53		56		
	Heating		dBA	-				
Sound pressure level	Cooling	High/Nom./Low	dBA	33/31/28		36/33/30		
	Heating	High/Nom./Low	dBA	33/31/28		36/33/30		
Refrigerant	Type			R-410A				
	GWP			2,087.5				
Piping connections	Sound absorbing insulation			Butyl Rubber				
	Liquid	Type/OD	mm	Flare connection/6.35				
	Gas	Type/OD	mm	Flare connection/9.52		Flare connection/12.7		
	Drain			VP20 (I.D. 20/O.D. 26)				
	Heat insulation			Foamed polystyrene / Foamed polyethylene				
2-2 Electrical Specifications				FNQ25A	FNQ35A	FNQ50A	FNQ60A	
Power supply	Phase			1~				
	Frequency		Hz	50/60				
	Voltage		V	220-240/220				

Notes

(1) Including installation legs

The sound power level is an absolute value indicating the power which a sound source generates.

3 Safety device settings

3 - 1 Safety Device Settings

FNQ-A

3

Safety devices		25	35	50	60
FNQ	Fuse	250V, 5A	250V, 5A	250V, 5A	250V, 5A
	Fan motor thermal protector	°C	---	---	---

3D097179

4 Options

4 - 1 Options

FNQ-A

	Optional equipment	Part name		Availability
				SA FNQ25A2YEB FNQ35A2YEB FNQ50A2YEB FNQ80A2YEB
Individual control systems	Wired remote control	BRC1D52	Current	X
		BRC1D61 (1)	Current	X
		BRC1E51A	Current	X
	Simplified remote control for hotel use	BRC2E52C7 (3)	Current	X
	Stylish remote control	BRC1E52A, BRC1E52B	Current	X
	Remote control for hotel use	BRC3E52C7 (3)	Current	X
	Wireless remote control	BRC4O65	Current	X
Centralised control systems	Central remote control	DCS302CA51	Current	X
		DSC302CA61 (1)	Current	X
	Unified ON/OFF controller	DSC301BA51	Current	X
		DCS301BA61 (1)	Current	X
	Schedule timer	DST301BA51 DST301BA61 (1)	Current	X
Residential central remote control	DCS303A51 (1) (2)	Current	X	
Other options	Adaptor for wiring	KRP1B56	Current	X
	Wiring adaptor for electrical appendices 1	KRP2A53	Current	X
	Wiring adaptor for electrical appendices 2	KRP4A54	Current	X
	Remote sensor	KRC901-4B	Current	X
	Installation box for adaptor PCB	KRP1BA101	Current	X
	Electrical box with earth terminal (2 blocks)	KJB212AA	Current	X
	Electrical box with earth terminal (3 blocks)	KJB311AA	Current	X
	Noise filter (for electromagnetic interface only)	KEK26-1A	Current	X
	External adaptor for outdoor unit (installation on indoor unit)	DTA104A53	Current	/
	Multi-tenant	DTA114A61	Current	/
	Digital input adaptor	BRP7A51 (4) (5)	Current	X

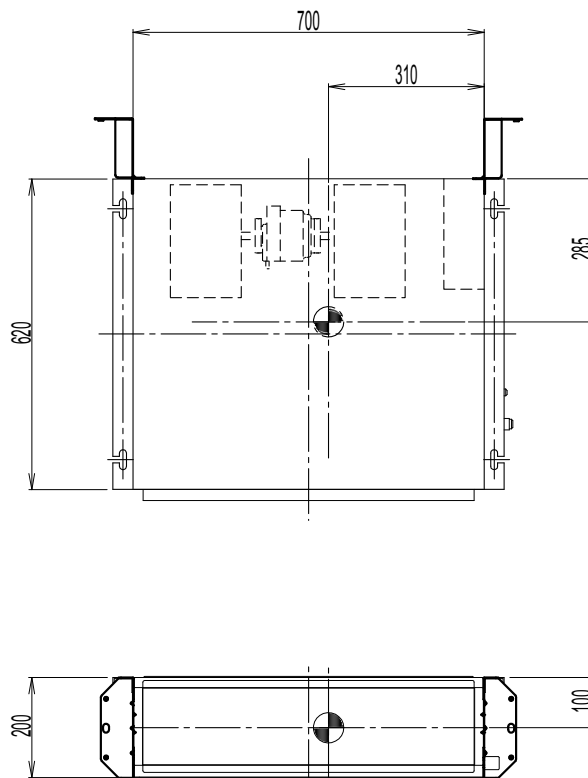
- Notes
- (1) : For Daikin Middle East only.
 - (2) : For residential use only. Cannot be used with other centralised control equipment.
 - (3) : Included languages are:
Language pack 1: English, German, French, Dutch, Spanish, Italian, and Portuguese.
With PC cable EKPCAB3 in combination with the Updater PC software, you can additionally change the language to:
Language pack 2: English, Bulgarian, Croatian, Czech, Hungarian, Romanian, and Slovenian.
Language pack 3: English, Greek, Polish, Russian, Serbian, Slovak, and Turkish.
 - (4) : This option needs to be installed together with installation box
 - (5) : Only possible in combination with simplified remote control BRC2/3E52C7.

3D096739

6 Centre of gravity

6 - 1 Centre of Gravity

FNQ25-35A

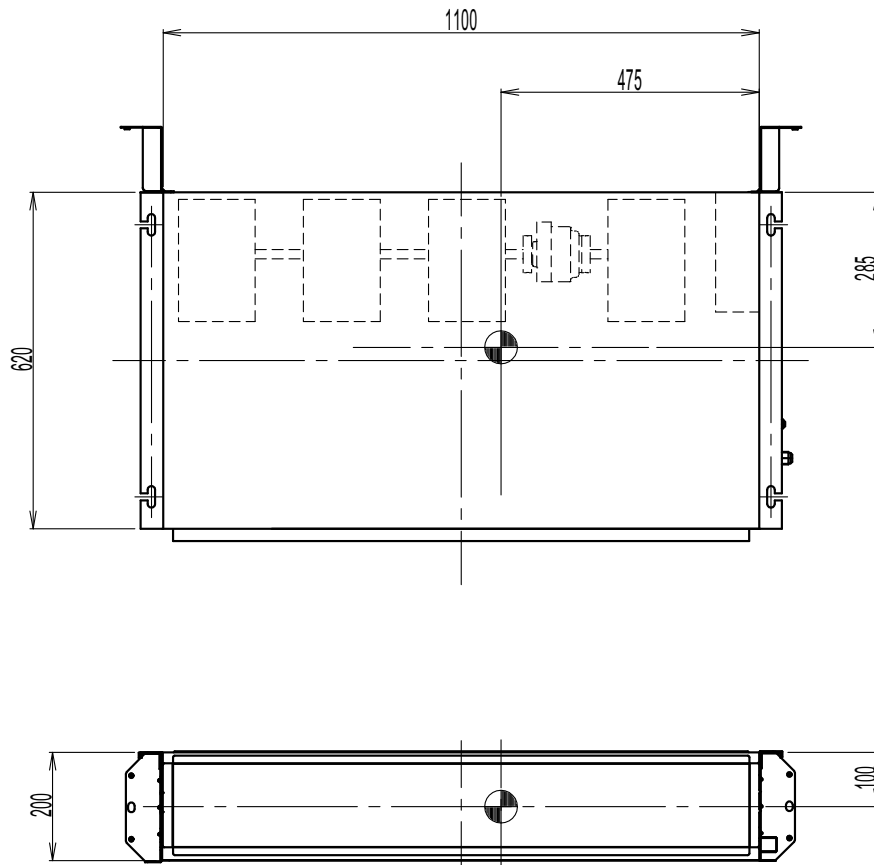


4D096841

6 Centre of gravity

6 - 1 Centre of Gravity

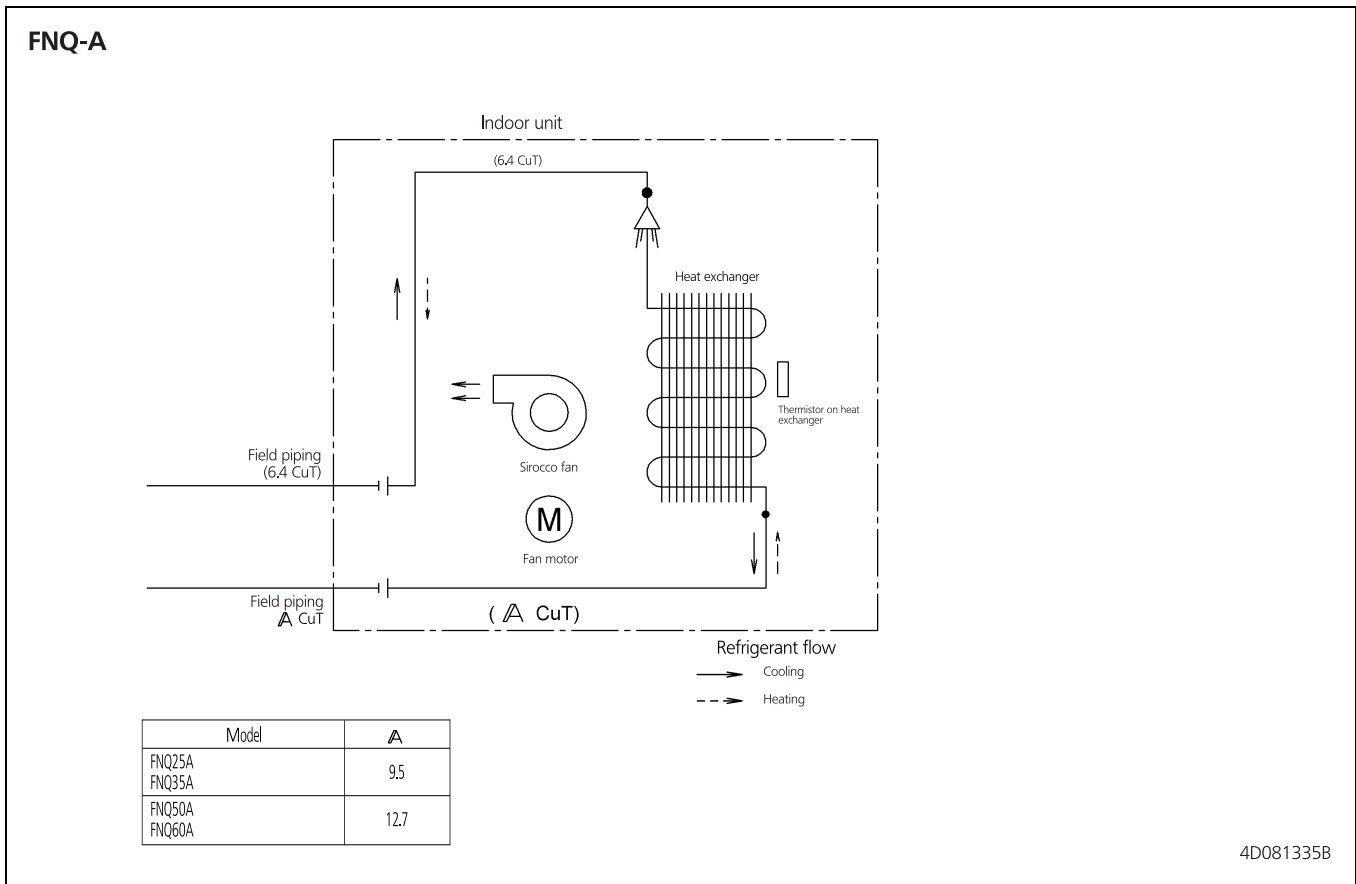
FNQ50-60A



4D096843

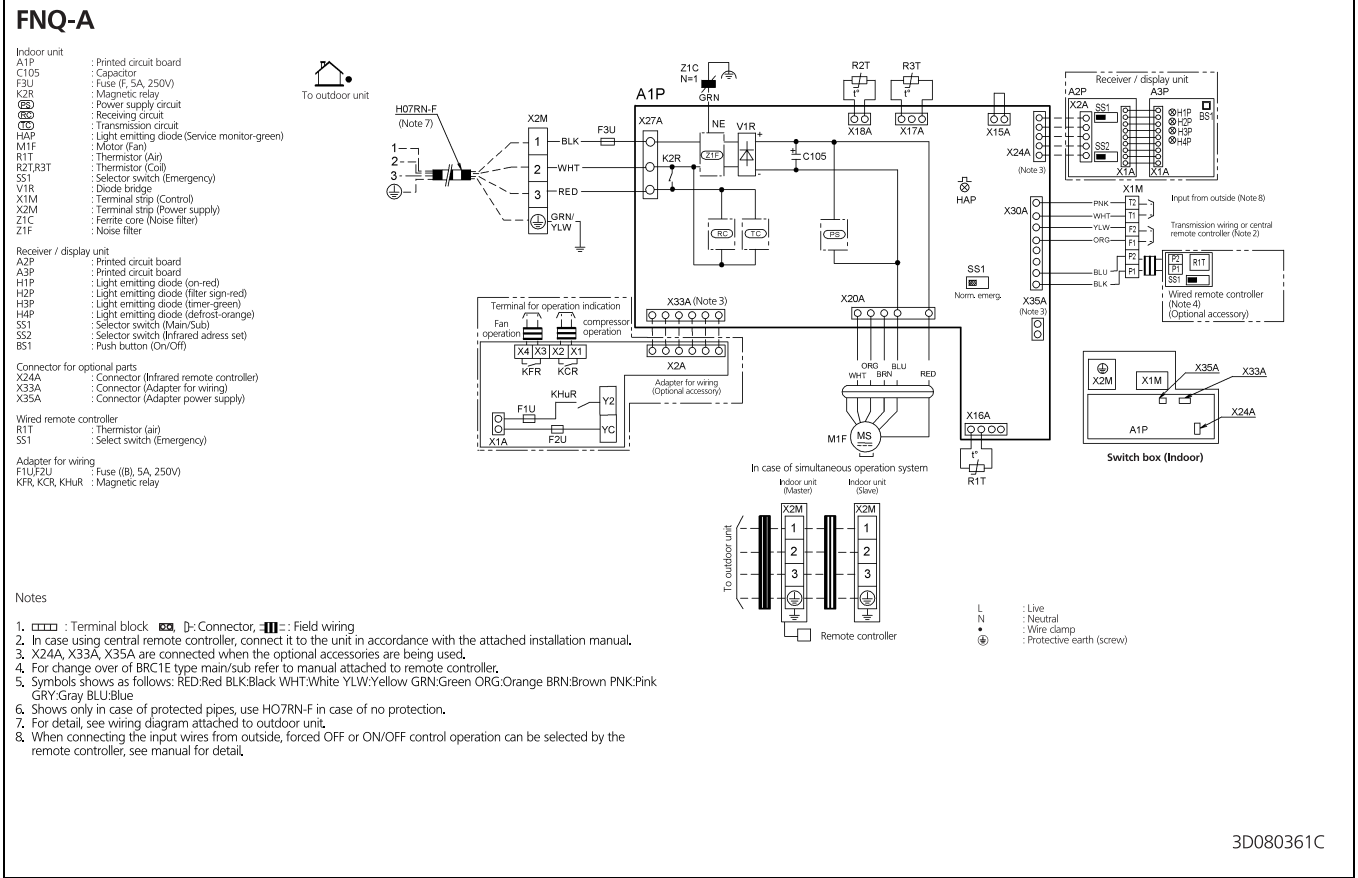
7 Piping diagrams

7 - 1 Piping Diagrams



8 Wiring diagrams

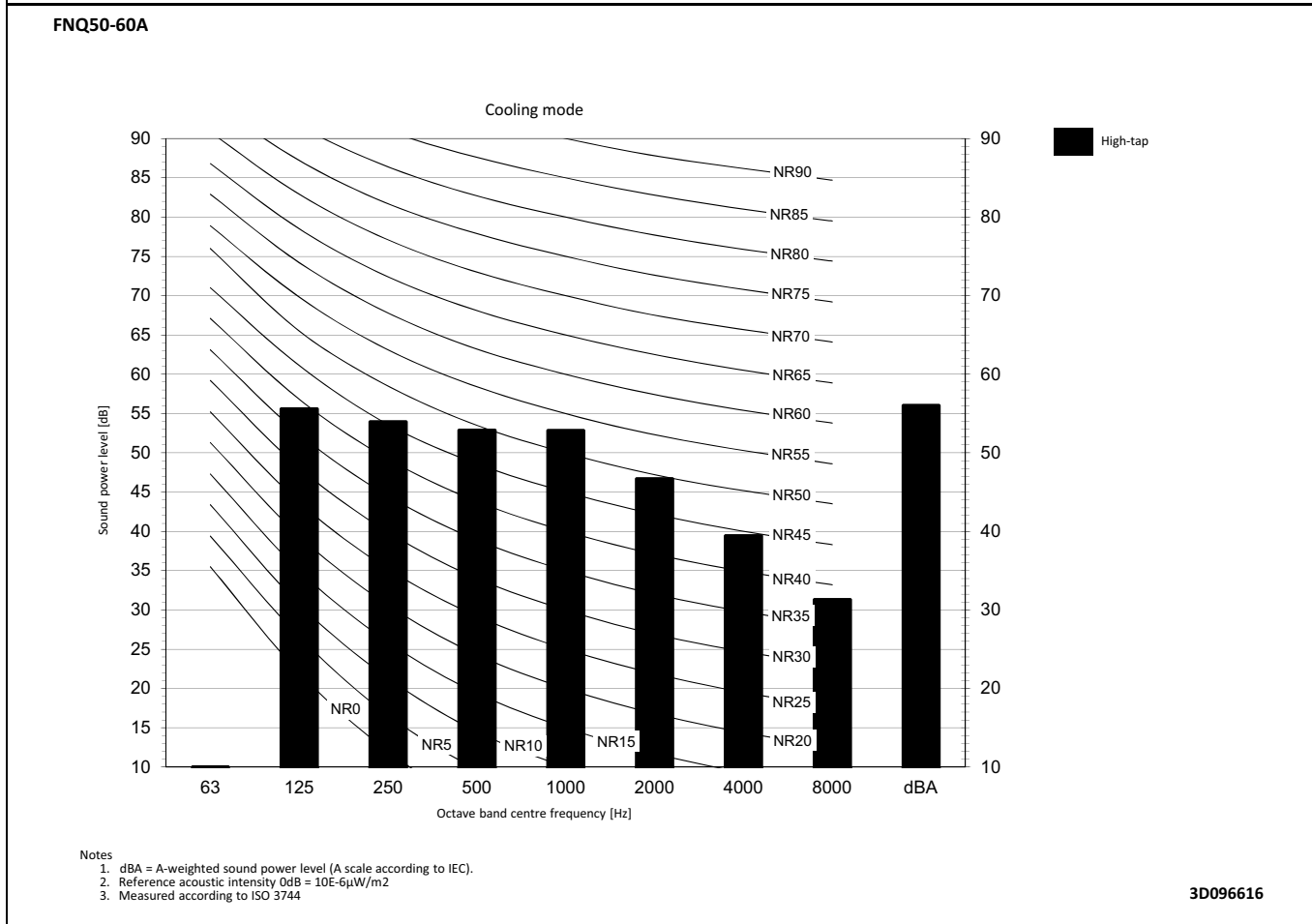
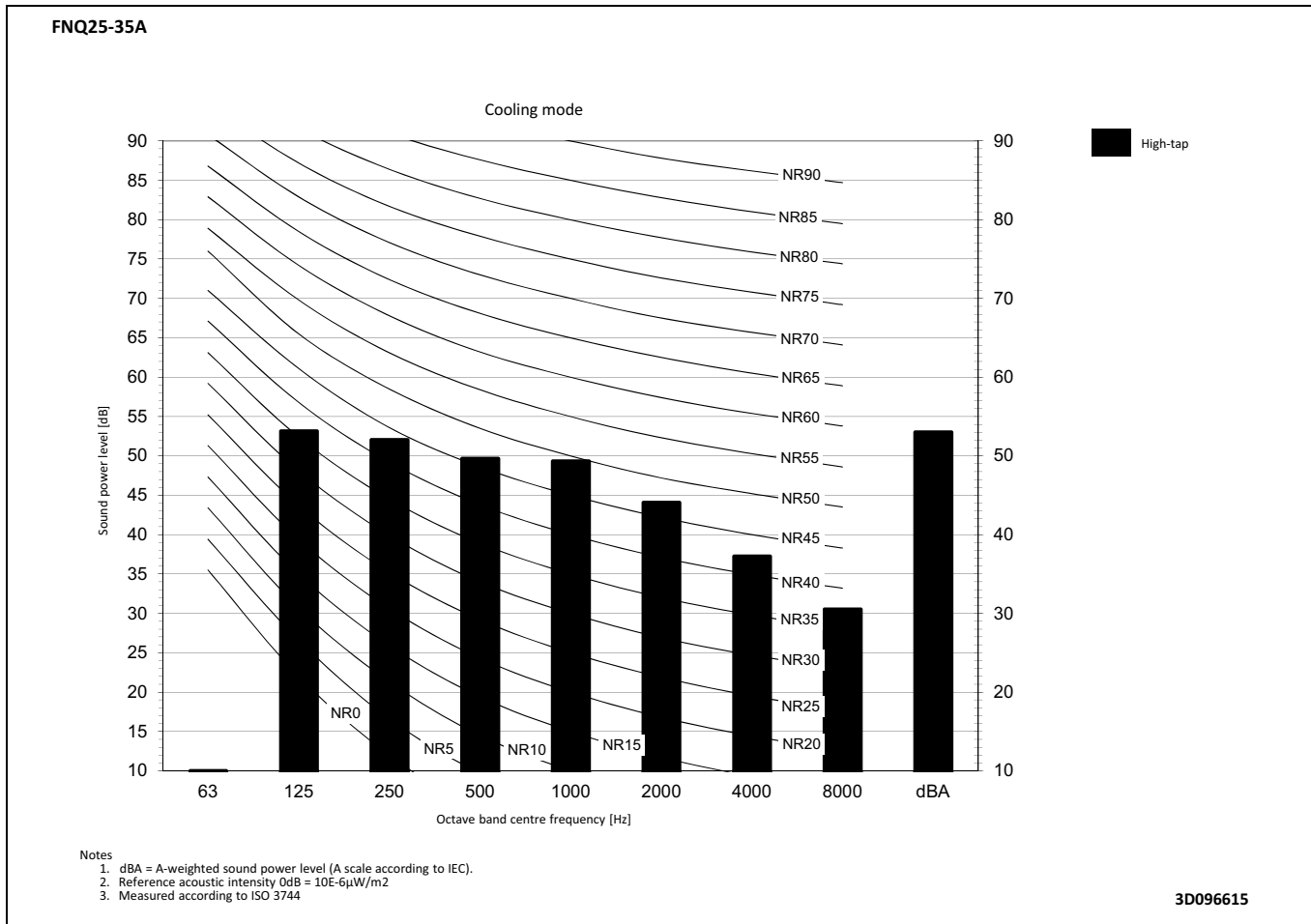
8 - 1 Wiring Diagrams - Single Phase



3D080361C

9 Sound data

9 - 1 Sound Power Spectrum

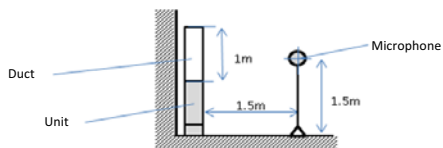
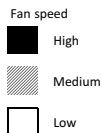
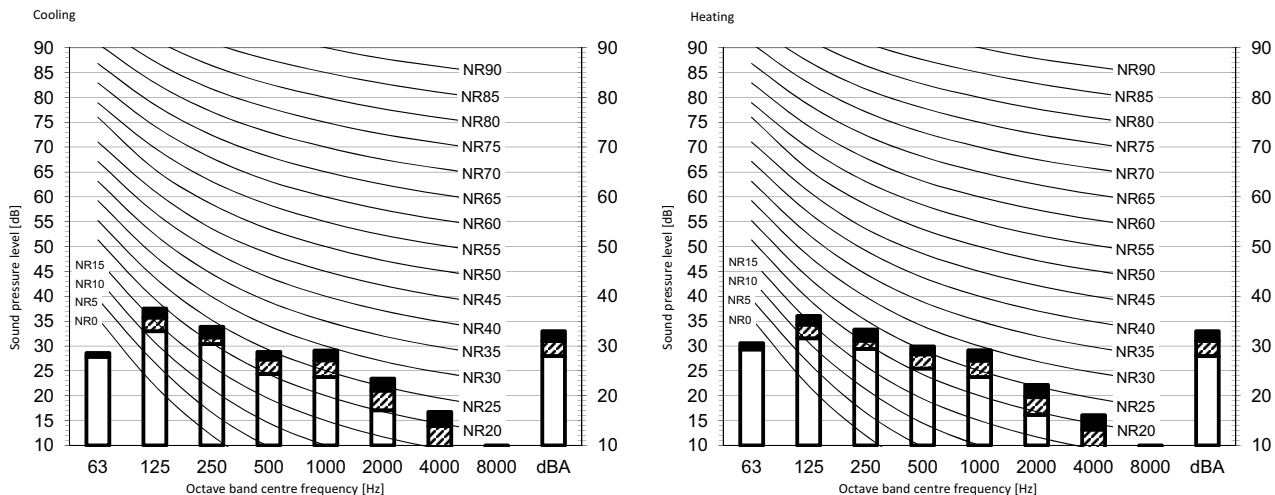


9 Sound data

9 - 2 Sound Pressure Spectrum

9

FNQ25-35A

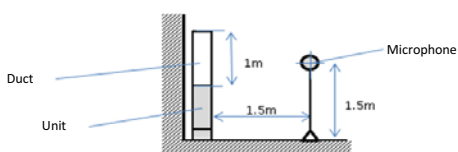
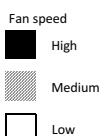
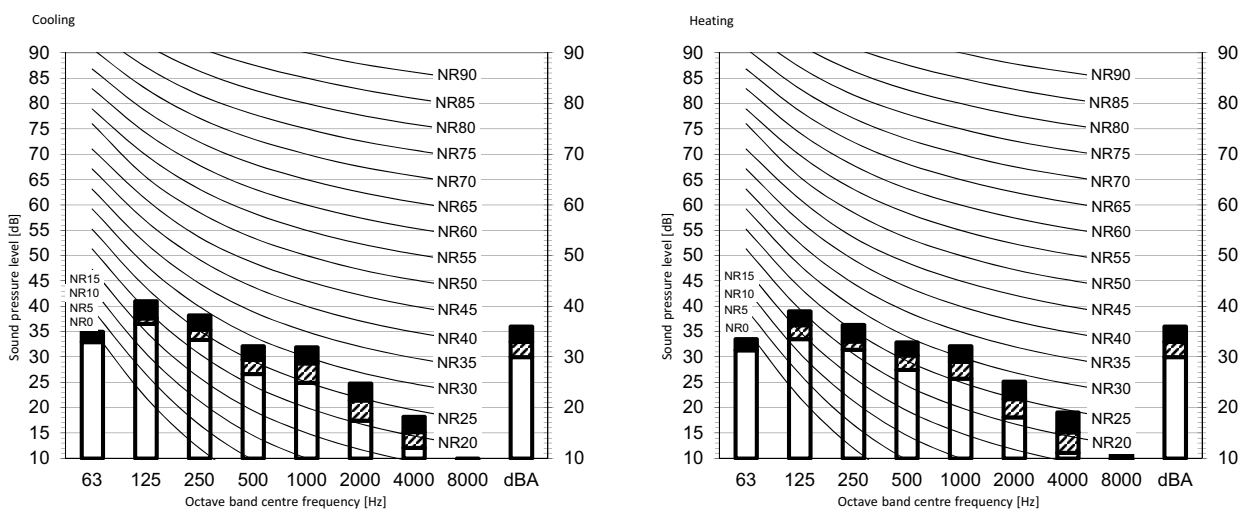


Notes

1. Data is valid at free field condition.
2. Data is valid at nominal operation condition.
3. dBA = A-weighted sound pressure level (A scale according to IEC).
4. Reference acoustic pressure 0 dB = 20 μPa

3D096733

FNQ50-60A



Notes

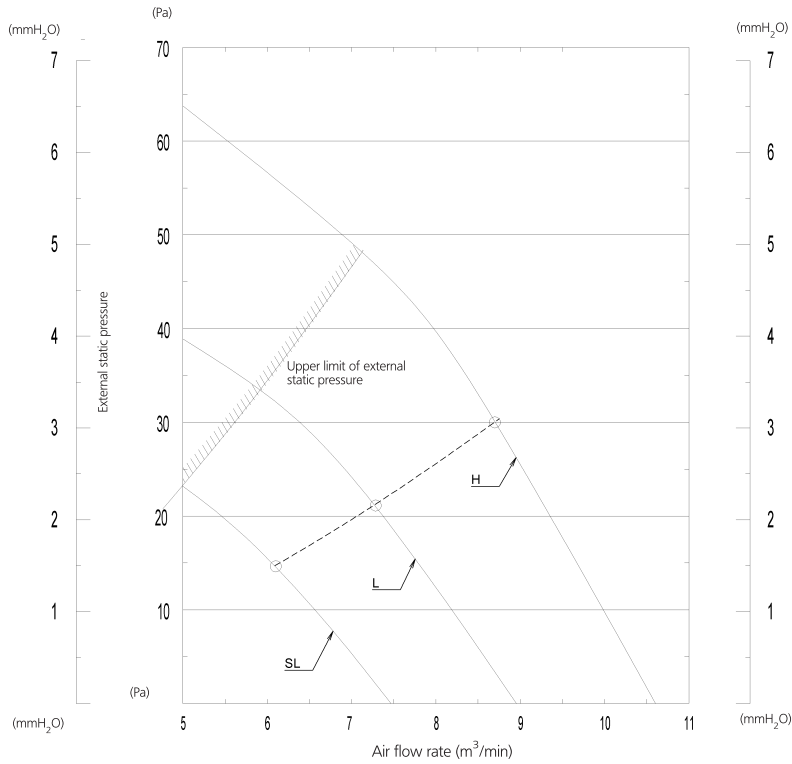
1. Data is valid at free field condition.
2. Data is valid at nominal operation condition.
3. dBA = A-weighted sound pressure level (A scale according to IEC).
4. Reference acoustic pressure 0 dB = 20 μPa

3D096734

10 Fan characteristics

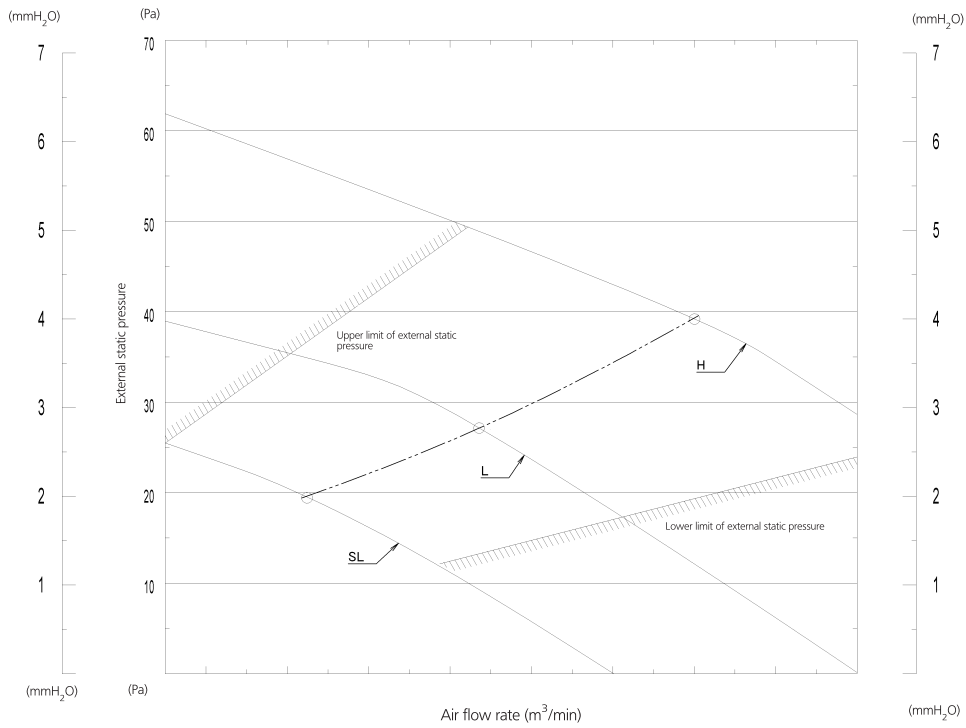
10 - 1 Fan Characteristics

FNQ25-35A



3D081327A

FNQ50A

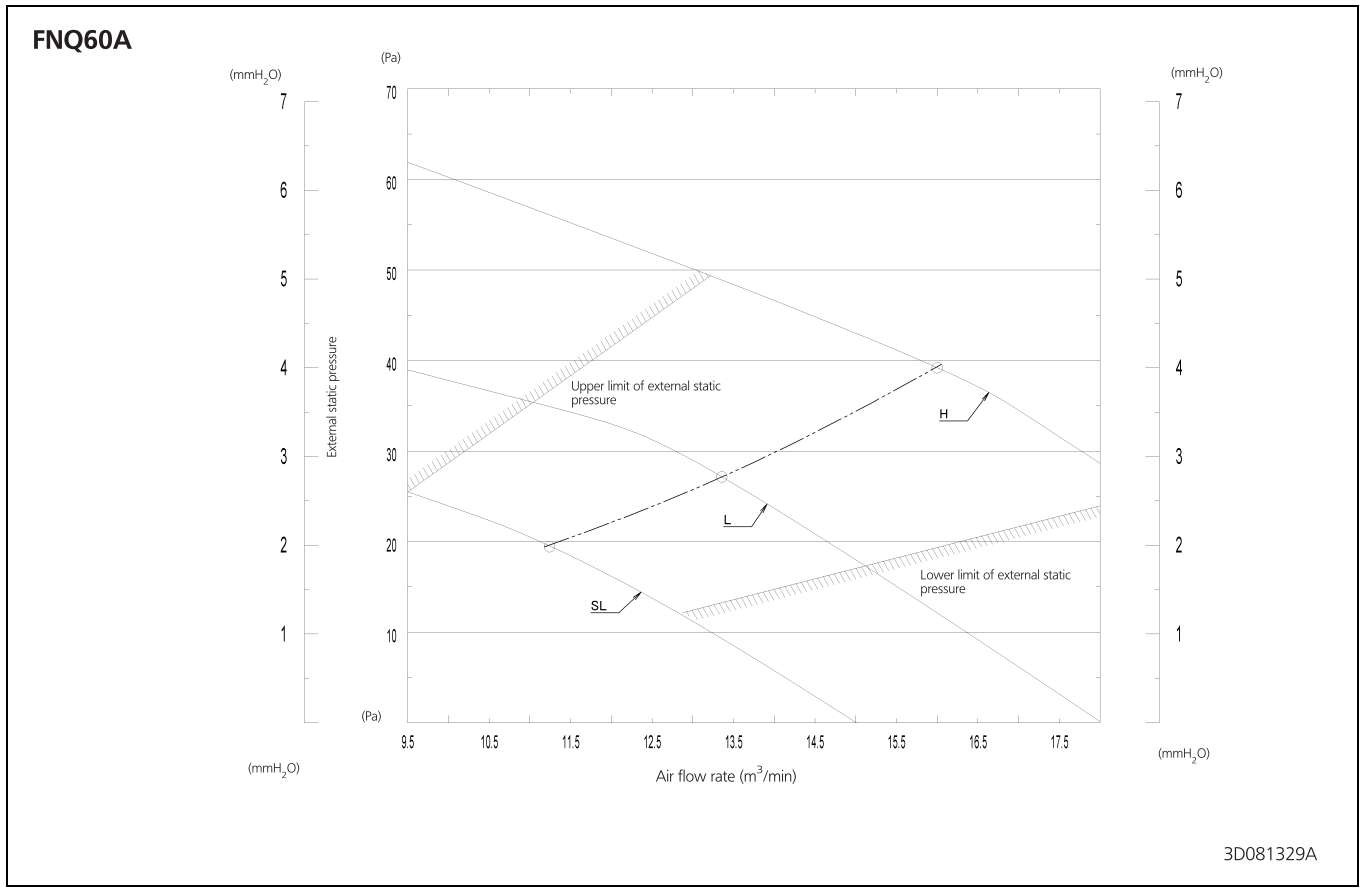


3D085960A

10 Fan characteristics

10 - 1 Fan Characteristics

10





Daikin Europe N.V. participates in the Eurovent Certification programme for Liquid Chilling Packages (LCP), Air handling units (AHU), Fan coil units (FCU) and variable refrigerant flow systems (VRF) Check ongoing validity of certificate online: www.eurovent-certification.com or using: www.certiflash.com

The present leaflet is drawn up by way of information only and does not constitute an offer binding upon Daikin Europe N.V.. Daikin Europe N.V. has compiled the content of this leaflet to the best of its knowledge. No express or implied warranty is given for the completeness, accuracy, reliability or fitness for particular purpose of its content and the products and services presented therein. Specifications are subject to change without prior notice. Daikin Europe N.V. explicitly rejects any liability for any direct or indirect damage, in the broadest sense, arising from or related to the use and/or interpretation of this leaflet. All content is copyrighted by Daikin Europe N.V.

BARCODE

Daikin products are distributed by: